

ultimatte

Smart Remote 2 Updater

January 30, 2007



ultimatte CORP.

20945 PLUMMER STREET
CHATSWORTH, CA 91311, U. S. A.

Ultimatte Web Site:
Support:
Phone
Fax

<http://www.ultimatte.com/>
support@ultimatte.com
818.993.8007
818.993.3726

Main Unit Model Info

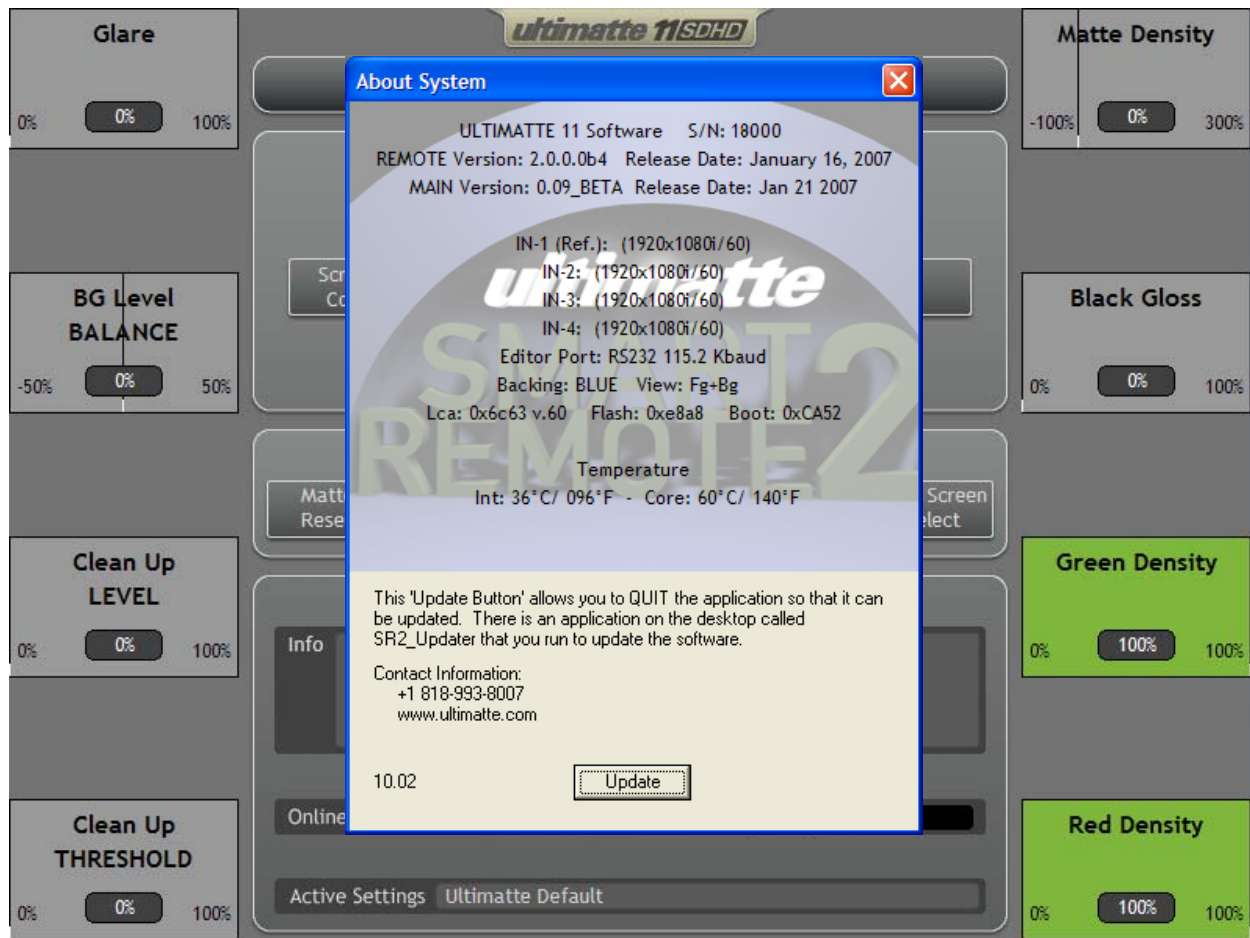


Figure 1. About System Window

A “double tap” in the Main Unit Model Info region (top center of display) will open a display window showing the software version of the Smart Remote 2 and its release date, the software version of the main unit and its release date, plus Flash and Boot information. Additionally, this window will display the current format of the input video connectors of the main unit.

Touch the X (top right) to close the About System window.

Update:

Selecting **Update** will quit the **Smart Remote 2** software (controlling the main unit) and display the Smart Remote 2 desktop with the **SR2_Updater** icon. This will allow the user to upgrade the **Smart Remote 2** software (not the main unit software and firmware).

Software Update

IMPORTANT: This process is to update the Smart Remote 2 software only.

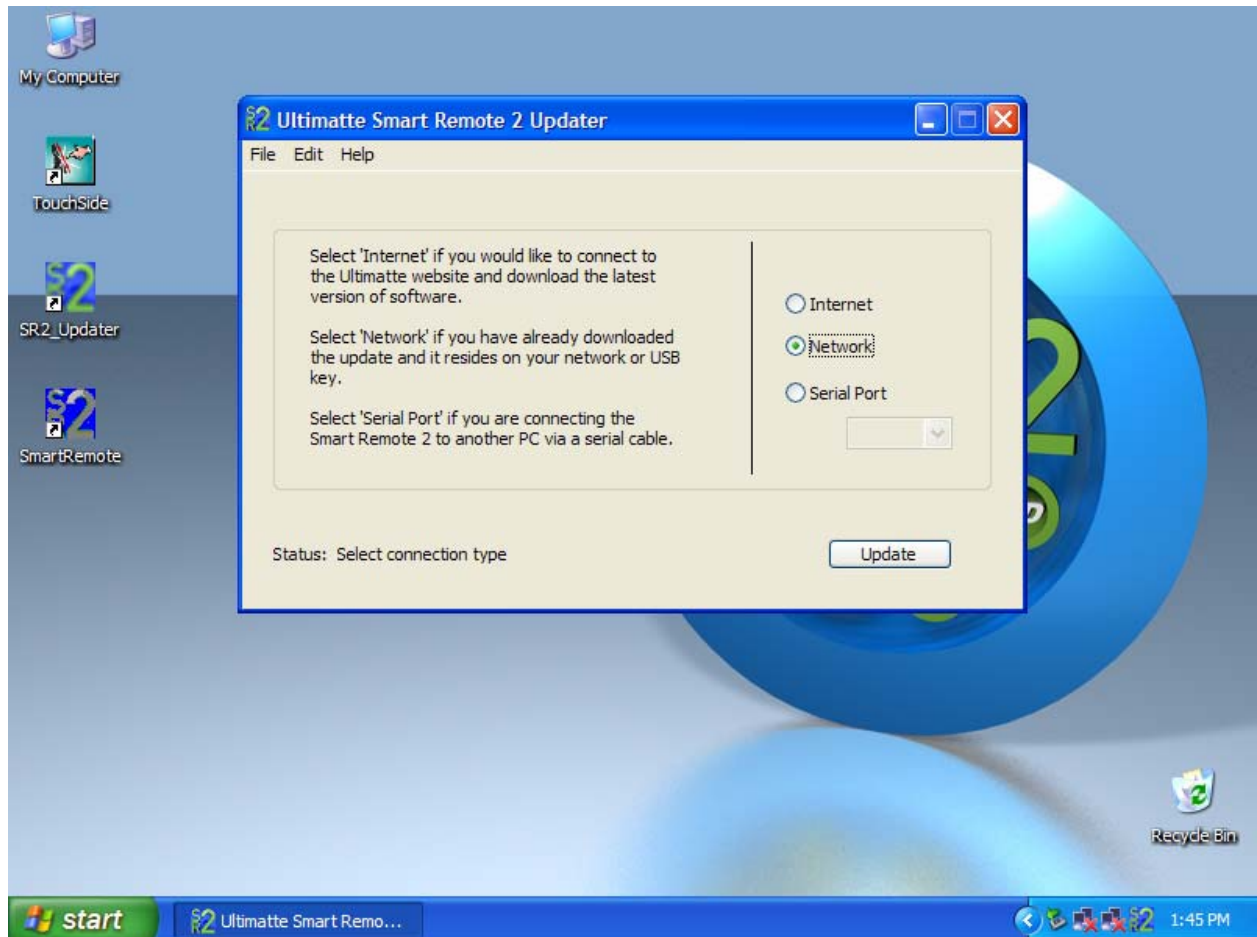


Figure 2. Smart Remote 2 Updater Window

From the Smart Remote 2 desktop select **SR2_Updater**. The Smart Remote 2 Updater dialog box offers the user three different methods of updating the Smart Remote 2 software (only).

Internet: If the Ethernet port on the back of the Smart Remote 2 is connected and there is access to the internet, selecting “Internet” will automatically download and install the latest version of the software from the Ultimatte website.

Network: If the Ethernet port on the back of the Smart Remote 2 is connected to the local network and the latest version of the software has been downloaded and resides on the network, selecting “**Network**” will allow the user to access the software and update the system.

This option is also used if the downloaded update is saved on a USB key and connected to the USB port on the back of the Smart Remote 2.

Serial Port: If the serial port (RS-232) is connected to another computer which has the downloaded update, selecting “**Serial Port**” will allow the user to access the computer and update the system.

Note: Connecting the Smart Remote 2 RS-232 port to another computer requires a null modem cable.

After selecting the updating method, touch Update to start the process of installing the new software.

To return to normal Smart Remote 2 operations, double click the Smart Remote icon on the desktop.