



# **EDIUS**

**EDIT ANYTHING**

## **Installation Guide**

Software Version 6

[www.grassvalley.com](http://www.grassvalley.com)

F0951009011  
September 2010

**Copyright**

Copyright 2010 Technicolor dba Grass Valley. All rights reserved. Portions of software © 2000 – 2010, Microsoft Corporation. All rights reserved. This document may not be copied in whole or in part, or otherwise reproduced except as specifically permitted under U.S. copyright law, without the prior written consent of Grass Valley, Inc., P.O. Box 59900, Nevada City, California 95959-7900. This product may be covered by one or more U.S. and foreign patents.

**Disclaimer**

Product options and specifications subject to change without notice. The information in this manual is furnished for informational use only, is subject to change without notice, and should not be construed as a commitment by Grass Valley, Inc. Grass Valley, Inc. assumes no responsibility or liability for any errors or inaccuracies that may appear in this publication.

**U.S.  
Government  
Restricted  
Rights Legend**

Use, duplication, or disclosure by the United States Government is subject to restrictions as set forth in subparagraph (c)(1)(ii) of the Rights in Technical Data and Computer Software clause at DFARS 252.277-7013 or in subparagraph c(1) and (2) of the Commercial Computer Software Restricted Rights clause at FAR 52.227-19, as applicable. Manufacturer is Grass Valley, Inc., P.O. Box 59900, Nevada City, California 95959-7900 U.S.A.

## Trademarks and Logos

Grass Valley, K2, Aurora, Summit, Dyno, Solo, Infinity, Turbo, Profile, Profile XP, NetCentral, NewsBrowse, NewsEdit, NewsQ, NewsShare, NewsQ Pro, and Media Manager are either registered trademarks or trademarks of Grass Valley, Inc. in the United States and/or other countries. Grass Valley, Inc. products are covered by U.S. and foreign patents, issued and pending. Additional information regarding Grass Valley, Inc. trademarks and other proprietary rights may be found at [www.grassvalley.com](http://www.grassvalley.com).

Other trademarks and logos used in this document are either registered trademarks or trademarks of the manufacturers or vendors of the associated products, such as Microsoft® Windows® operating system, Windows Media® player, Internet Explorer® internet browser, and SQL Server™. QuickTime and the QuickTime logo are trademarks or registered trademarks of Apple, Inc., used under license therefrom. Intel, Pentium, Xeon and Core Duo are the trademarks or registered trademarks of Intel Corporation or its subsidiaries in the United States of America and other countries. Adobe, Adobe logo, Adobe Reader, Adobe Photoshop and After Effects are registered trademarks of Adobe Systems Incorporated. Dolby, Dolby and the Double D symbol are registered trademarks of Dolby Laboratories. They are manufactured based on their own license.



## Manual Explanation

- If there are any variations between the explanation in this manual and the actual application method, priority is given to the actual application method.
- The screens used as examples in this manual are those of the development stage, so they may vary from those in the final product.
- This manual is written for people who have a basic knowledge of how to use a computer. If there are no special instructions, perform the same operation as a normal computer operation.
- In this manual, Microsoft® Windows® 7 operating system is described as Windows 7 (collective term of Ultimate, Professional, Home Premium, and Home Basic).
- In this manual, Microsoft® Windows Vista® operating system is described as Windows Vista (collective term of Ultimate, Business, Home Premium, and Home Basic).
- In this manual, Microsoft® Windows® XP Professional operating system is described as Windows XP.

## Revision Status

Rev Date	Description
September 1, 2010	Release F0951009011

# Contents

## 1 Before Installing EDIUS

Before Using EDIUS .....	6
Contacting Grass Valley .....	7
For Users of the Upgrade Version .....	9

## 2 Installation/Uninstallation

Installing EDIUS .....	10
Installing Attached Application Software .....	16
Uninstallation .....	17

## 3 License Transfer

Transferring license .....	20
----------------------------	----

# *Before Installing EDIUS*

## Before Using EDIUS

### Package Contents

Please verify that the following items are included in EDIUS.

- EDIUS 6 Installation DVD
- Bonus software for EDIUS 6\*
- USB key
- Serial number for installation
- Installation Guide (this book)
- User registration card

\* Items in the package vary depending on the purchased product.

#### Notes

- You cannot install the application without the installation serial seal. Be sure to store the provided option with the installation serial seal pasted.

### USB key

When using EDIUS, please plug in the USB key to the USB port on your PC. If the USB key is not attached, EDIUS will run in a 30 day trial mode. To use EDIUS without attaching the USB key, please refer to the "License Transfer" section.

**License Transfer ► P20**

USB key in the package stores the license for using EDIUS. When the USB key is lost, please note that the key cannot be reissued for any reason. Keep the key securely.

**POINT** • If no USB port on your PC is available any more, prepare a USB hub unit commercially produced. You can transfer the license which is stored in the USB key to the local disk of PC, with the license transfer tool.

## Contacting Grass Valley

<b>International Support Centers</b>	<b>France 24 x 7</b>	+800 8080 2020 or +33 1 48 25 20 20	<b>United States/ Canada 24 x 7</b>	+1 800 547 8949 or +1 530 478 4148
		<b>Asia</b> Hong Kong, Taiwan, Korea, Macau: +852 2531 3058 Indian Subcontinent: +91 22 24933476 Southeast Asia/Malaysia: +603 7805 3884 Southeast Asia/Singapore: +65 6379 1313 China: +861 0660 159 450 Japan: +81 3 5484 6868		
<b>Local Support Centers (available during normal business hours)</b>	<b>Australia and New Zealand:</b> +61 1300 721 495		<b>Central/South America:</b> +55 11 5509 3443	
	<b>Middle East:</b> +971 4 299 64 40 <b>Near East and Africa:</b> +800 8080 2020 or +33 1 48 25 20 20			
	<b>Europe</b>	<b>Belarus, Russia, Tadjikistan, Ukraine, Uzbekistan:</b> +7 095 2580924 225 <b>Switzerland:</b> +41 1 487 80 02 <b>S. Europe/Italy-Roma:</b> +39 06 87 20 35 28 <b>-Milan:</b> +39 02 48 41 46 58 <b>S. Europe/Spain:</b> +34 91 512 03 50 <b>Benelux/Belgium:</b> +32 (0) 2 334 90 30 <b>Benelux/Netherlands:</b> +31 (0) 35 62 38 42 1 <b>N. Europe:</b> +45 45 96 88 70 <b>Germany, Austria, Eastern Europe:</b> +49 6150 104 444 <b>UK, Ireland, Israel:</b> +44 118 923 0499		

## Grass Valley Web Site

The <http://www.grassvalley.com> web site offers the following:

Online User Documentation — Current versions of product catalogs, brochures, data sheets, ordering guides, planning guides, manuals, and release notes in .pdf format can be downloaded.

FAQ Database — Solutions to problems and troubleshooting efforts can be found by searching our Frequently Asked Questions (FAQ) database.

Software Downloads — Download software updates, drivers, and patches.



### END-OF-LIFE PRODUCT RECYCLING NOTICE

Grass Valley's innovation and excellence in product design also extends to the programs we've established to manage the recycling of our products. Grass Valley has developed a comprehensive end-of-life product take back program for recycle or disposal of end-of-life products. Our program meets the requirements of the European Union's WEEE Directive, the United States Environmental Protection Agency, and U.S. state and local agencies.

Grass Valley's end-of-life product take back program assures proper disposal by use of Best Available Technology. This program accepts any Grass Valley branded equipment. Upon request, a Certificate of Recycling or a Certificate of Destruction, depending on the ultimate disposition of the product, can be sent to the requester.

Grass Valley will be responsible for all costs associated with recycling and disposal, including freight. However, you are responsible for the removal of the equipment from your facility and packing the equipment to make it ready for pickup.



For further information on the Grass Valley product take back system please contact Grass Valley at + 800 80 80 20 20 or +33 1 48 25 20 20 from most other countries. In the U.S. and Americas please call 800-547-8949 or 530-478-4148, and ask to be connected to the EH&S Department. Additional information concerning the program can be found at: [www.grassvalley.com/about/environmental-policy](http://www.grassvalley.com/about/environmental-policy)



## **For Users of the Upgrade Version**

After installing EDIUS 6 according to the procedure in this manual, the following settings made in the previously used version of EDIUS will be maintained.

- User preset effects
- Style chips customized with QuickTitler
- Keyboard shortcuts\*

\* Only shortcuts whose assignment have not been changed in EDIUS 6 will be maintained.

Settings other than the above made in the former version of EDIUS are not maintained. Start up EDIUS 6, click "Settings" on the menu bar, click "System Settings" or "User Settings", and modify the settings for EDIUS 6. Refer to EDIUS User Reference Guide for the details.

# *Installation/Uninstallation*

## **Installing EDIUS**

The following procedure describes how to install EDIUS 6 on Windows 7. (Supplementary explanations are given for different actions of Windows Vista/Windows XP.)

### **Notes**

- Before starting installation, close all the other applications that may be running in the task tray.
- Installation requires the account authorized for the administrator (such as PC administrator).
- Application to be installed may differ depending on model.
- Any older version of EDIUS on the PC will be uninstalled when installing EDIUS 6. Before installation, create the customized setting file as a backup, such as keyboard shortcuts and uninstall the preinstalled EDIUS.
- If you use Windows Vista, "Found New Hardware" ("Found New Hardware Wizard" in Windows XP) dialog box appears when starting up your PC after mounting a Grass Valley hardware product. Select [Cancel].

- 1 Set the EDIUS 6 Installation DVD into the DVD-ROM drive.

If the application does not start automatically, open the EDIUS 6 Installation DVD, and double-click "Setup.exe".

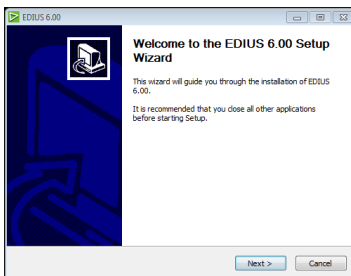
- 2 Click "Install".



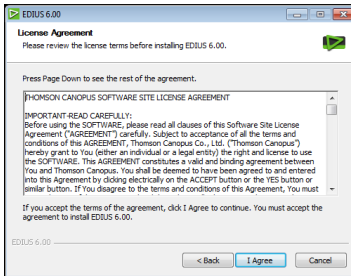
"EDIUS 6.xx Setup Wizard" dialog box appears.

- POINT**
- When the other version of EDIUS has been installed, uninstall it along to the screen instruction and restart PC.

- 3 Click [Next].



#### 4 Click [I Agree] to agree the license agreement.



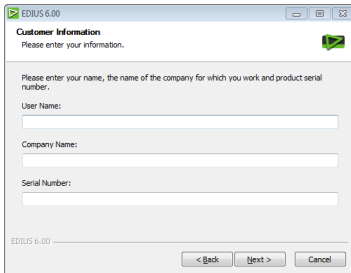
### POINT

- If you do not accept the terms, click [Cancel]. If you do not agree to the license agreement, you cannot use this product.

### Notes

- Be sure of reading through terms and conditions by scrolling whole description.

#### 5 Specify the user name, company name, and serial number, and click [Next].



### For users who install the upgrade version

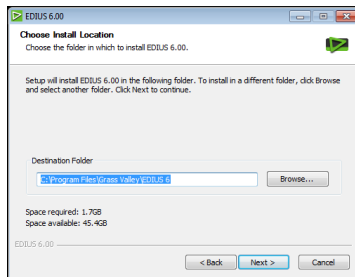
The screen appears after step 5, to enter the serial number of the previously used version of EDIUS. Enter the serial number of EDIUS you are using, and click [Next].

**POINT**

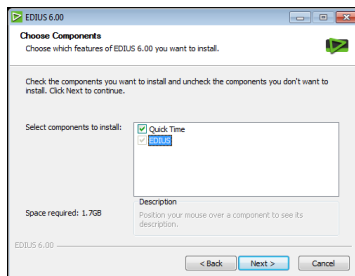
- Enter the serial number of 6 to 16 digits, which is pasted on the product package of EDIUS version 6 Installation DVD.
- Please note that the serial number cannot be reissued. Keep the number securely.

**6** Specify the folder to install EDIUS, and click [Next].

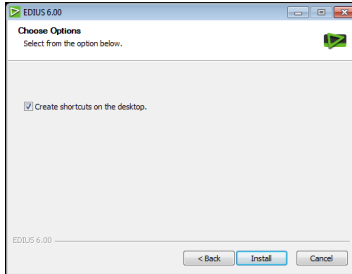
Click [Browse], and select the folder, to install in another folder.

**7** Click [Next].

Check "QuickTime" if necessary.



**8** Click [Install].

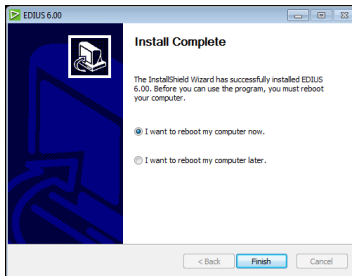


Installation of EDIUS starts.

If you are installing EDIUS after mounting a Grass Valley hardware product, a message appears to confirm if you install the driver. Click [Install] (for Windows XP, click [Continue Anyway]).

**9** Select "I want to reboot my computer now" or "I want to shutdown my computer now." and click [Finish].

The displayed screen may differ depending on your system environment.



Installation of EDIUS is completed.

**POINT**

- USB key in the package stores the license for using EDIUS. Attach the USB key to the USB port of PC for using EDIUS. If the detection is completed properly, the message appears to notify that new hardware is found.

## Installing Attached Application Software

Install attached application software if necessary. The following procedure describes how to install the software on Windows 7. (Supplementary explanations are given for different actions of Windows Vista/Windows XP)

- Notes**
- The supplied application programs vary, depending on the product package you purchased.

### Tools folder contents

The following contents are provided in Tools Folder.

<b>AdobeReader</b>	Adobe Reader is included. Use it to view the PDF manuals provided. If Adobe Reader has not been installed on your PC, execute the setup file and install it by following the on-screen instruction.
<b>EdiusLM</b>	License Transfer Tool is included. <b>License Transfer ► P20</b>
<b>Keyboard Shortcut</b>	Included files are the default shortcut key file, "Avid shortcut for EDIUS.dat", "EDIUS Pro3 shortcut.dat", "FinalCutPro shortcut for EDIUS.dat", and "FinalCutPro shortcut for EDIUS (104 Keys - English) .dat". Refer to EDIUS User Reference Guide for details to read the file.



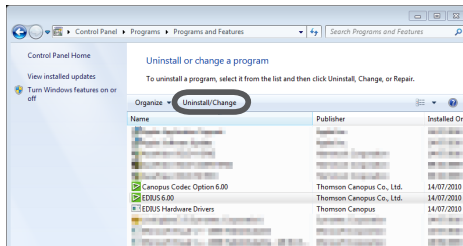
# Uninstallation

## Uninstalling application software from Windows 7/ Windows Vista

### Notes

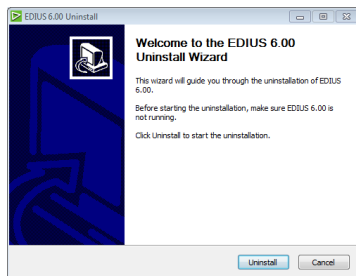
- Close all other applications including resident software before uninstallation.
- Uninstallation requires the account authorized for the administrator (such as PC administrator).

- 1 Click "Start" menu and click "Control Panel".
- 2 Click "Uninstall a program".
- 3 Select "EDIUS 6.xx" and click [Uninstall/Change].



**4** Click [Uninstall].

For Windows Vista, click [Continue] and click [Uninstall].



Uninstallation starts.

**5** Click [Finish].

PC will be rebooted. Uninstallation is now completed.

## Uninstalling application software from Windows XP

### Notes

- Close all other applications including resident software before uninstallation.
- Uninstallation requires the account authorized for the administrator (such as PC administrator).

**1** Click "Start" menu and click "Control Panel".

**2** Double-click "Add or Remove Programs".

**3** Select "EDIUS 6.xx" and click [Change/Remove].

**4** Click [Uninstall].



Uninstallation starts.

**5** Click [Finish].

The computer will reboot. Uninstallation is completed.

# License Transfer

## Transferring license

When you are using EDIUS on a desktop PC where the numbers of USB ports are limited, or when you do not want to carry USB key, consider transferring EDIUS licenses. Make sure to read and understand the following notes before transferring licenses. The procedure in Windows 7 is described here. The operation is same in Windows Vista/Windows XP.

### Notes

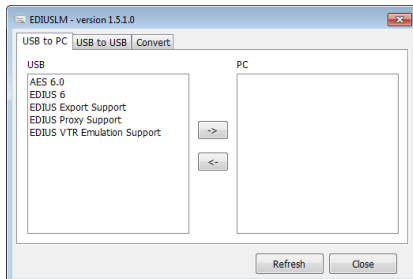
- The license transfer tool must be executed on a PC where EDIUS has been installed.
- When you close the license transfer tool, make sure that the transferring procedures of license have been completed. If you close the tool while processing, your EDIUS license may be lost.
- Please note that the USB key cannot be reissued no matter what the circumstances (even when the license information exists on a PC). Keep the USB key securely.
- License can only be transferred between PC and USB key, or between USB keys. It cannot be transferred from a PC to another PC.

## Notes

- If you have several licenses of the same product, they cannot be integrated in one USB key.
- If you have transferred the license to a PC, there is a possibility that the license may be lost because of the malfunction of a hard disk drive or any other reasons. It is recommended that you should not transfer the license to a PC unless there is a compelling reason.
- Note that when you have transferred the license to a PC, the registered license data may become invalid if you change the hardware (CPU, Memory, Motherboard, HDD, NIC, etc) configurations.

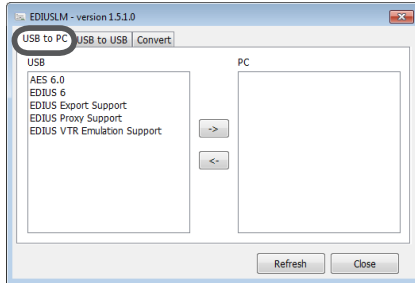
## Starting up License Transfer Tool

- 1 Attach the USB key to the USB port of a PC.
  - 2 Insert EDIUS 6 Installation DVD into the DVD drive of a PC, and click "Tools Folder".
  - 3 Double-click "EdiusLM.exe" in "EdiusLM" folder.
- "EDIUSLM" dialog box appears.



## Transfer from USB key to Local Disk of PC

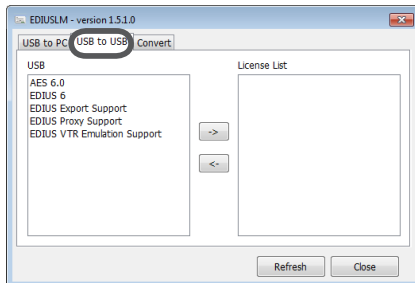
- 1 Click "USB to PC" tab in "EDIUSLM" dialog box.



- 2 Select a license to transfer and click [->].  
To transfer from a PC to a USB key, click [-<].
- 3 Click [Close] when transfer is completed.

## Transfer between USB keys

- 1 Click "USB to USB" tab in "EDIUSLM" dialog box.



- 2 Select a license and click [->] to move to the transfer option.

- 3 Replace the USB key to the one to transfer the license, and click [Refresh].

**Notes**

- Remove the USB key of the original source from the USB port of the PC and attach the USB key of the transfer destination.
- Click [Refresh] to refresh the list every time after replacing USB keys.

- 4 Select a license and click [<-] to transfer the license.

- 5 Click [Close] when transfer is completed.

**Notes**

- Do not replace the USB key while transferring the license.
- Replace the USB key one by one when transferring the license.